

FCA - SNMP Ethernet Interface Module

The FOCUS Communications Agent (FCA) allows for IP based management of FOCUS nodes. FCA and FOCUS Communication Software (FCS) provide Simple Network Management Protocol (SNMP) traps and Telnet communications between management stations and FOCUS networks over TCP/IP Local or Wide Area Networks. The FCA interface is designed to work with any standard SNMP management software. A PC connected to the same Ethernet LAN can be used to communicate with any FOCUS in the same system utilizing the FCS Remote Node Configuration (RNC) feature. The FOCUS system must be equipped with Maintenance version 3 (MV3) or greater.

The FCA interface module is installed in chassis slot 12 and connects to FOCUS via the front or rear serial port. Local

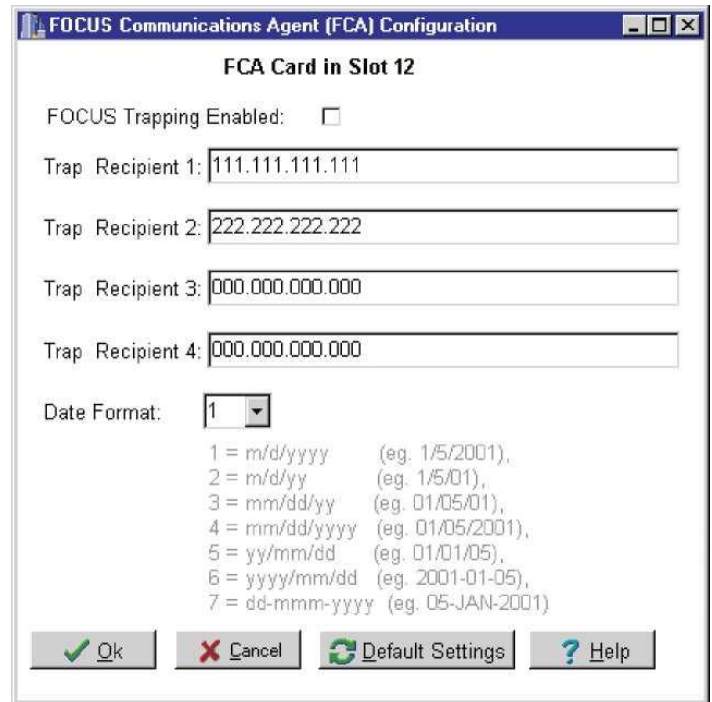
puter access, via FCS, remains available through the front serial port on the Maintenance Module. The FCA provides a 10/100 baseT connection for use in Ethernet LANs. FCA modules can be used at every FOCUS node in a network or only in nodes where LAN connectivity is desired. All other FOCUS units connected in the system can be accessed and monitored through a single FCA gateway.

When an event occurs in a remote FOCUS node, equipped with the trap enable option, the event information is forwarded via RNC to the FOCUS node containing the FCA. The FCA then generates a "trap" for event notification to be sent over the Ethernet LAN to up to 4 user-defined recipients.

Sample FOCUS trap event notifications include:

- Low Signal alarm for any transceiver
- Loss of Sync in any transceiver
- Receiver error
- No Transceiver detected
- NOVRAM error
- Channel Card not responding
- EXP Chassis bad
- Trip Key or Trip Out Active
- Main or Standby Power Supply Alarm
- Memory Error
- Framer Failure

Events are defined in the supplied Management Information Base (MIB) to work with your SNMP network management software. The user may individually select which events, within a given FOCUS node, are trapped and sent to the SNMP manager via the FCA.



Алматы (7273)495-231
 Ангартк (3955)60-70-56
 Архангельск (8182)63-90-72
 Астрахань (8512)99-46-04
 Барнаул (3852)73-04-60
 Белгород (4722)40-23-64
 Благовещенск (4162)22-76-07
 Брянск (4832)59-03-52
 Владивосток (423)249-28-31
 Владикавказ (8672)28-90-48
 Владимир (4922)49-43-18
 Волгоград (844)278-03-48
 Вологда (8172)26-41-59
 Воронеж (473)204-51-73
 Екатеринбург (343)384-55-89
 Иваново (4932)77-34-06

Ижевск (3412)26-03-58
 Иркутск (395)279-98-46
 Казань (843)206-01-48
 Калининград (4012)72-03-81
 Калуга (4842)92-23-67
 Кемерово (3842)65-04-62
 Киров (8332)68-02-04
 Коломна (4966)23-41-49
 Кострома (4942)77-07-48
 Краснодар (861)203-40-90
 Красноярск (391)204-63-61
 Курган (3522)50-90-47
 Курск (4712)77-13-04
 Липецк (4742)52-20-81
 Магнитогорск (3519)55-03-13

Россия +7(495)268-04-70

Москва (495)268-04-70
 Мурманск (8152)59-64-93
 Набережные Челны (8552)20-53-41
 Нижний Новгород (831)429-08-12
 Новокузнецк (3843)20-46-81
 Новосибирск (383)227-86-73
 Ноябрьск (3496)41-32-12
 Омск (3812)21-46-40
 Орел (4862)44-53-42
 Оренбург (3532)37-68-04
 Пенза (8412)22-31-16
 Пермь (342)205-81-47
 Петрозаводск (8142)55-98-37
 Псков (8112)59-10-37

Казахстан +7(7172)727-132

Ростов-на-Дону (863)308-18-15
 Рязань (4912)46-61-64
 Самара (846)206-03-16
 Санкт-Петербург (812)309-46-40
 Саранск (8342)22-96-24
 Саратов (845)249-38-78
 Севастополь (8692)22-31-93
 Симферополь (3652)67-13-56
 Смоленск (4812)29-41-54
 Сочи (862)225-72-31
 Ставрополь (8652)20-65-13
 Сургут (3462)77-98-35
 Сыктывкар (8212)25-95-17
 Тамбов (4752)50-40-97

Киргизия +996(312)96-26-47

Тверь (4822)63-31-35
 Тольятти (8482)63-91-07
 Томск (3822)98-41-53
 Тула (4872)33-79-87
 Тюмень (3452)66-21-18
 Улан-Удэ (3012)59-97-51
 Ульяновск (8422)24-23-59
 Уфа (347)229-48-12
 Хабаровск (4212)92-98-04
 Чебоксары (8352)28-53-07
 Челябинск (351)202-03-61
 Череповец (8202)49-02-64
 Чита (3022)38-34-83
 Якутск (4112)23-90-97
 Ярославль (4852)69-52-93